



Australian Government

Comcare

# Comcare Update 2009

## Session 1

Matt Goldrick – General Manager

Prevention and Rehabilitation Branch

AUSTRALIA'S  
SAFEST  
WORKPLACES

[www.comcare.gov.au](http://www.comcare.gov.au)

# The Comcare scheme

- Comcare regulates OHS, rehabilitation and compensation for the Commonwealth jurisdiction
- Comcare's statutory functions focus on reducing the incidence and minimising the duration and severity of work-related injuries and diseases
- Is highly integrated – combines injury prevention, injury management and compensation, focussed on support during injury

# Regulatory Approach

- a systems-based approach
- an integrated approach to OHS, rehabilitation and claims management
- effective and regular consultation
- a sound and effective legislative framework
- better practice regulation will lead to efficiencies for employers, other stakeholders and Comcare and maintain a safe jurisdiction, and
- regulatory decisions that are transparent, accountable, consistent and proportionate

# Who is in the scheme?

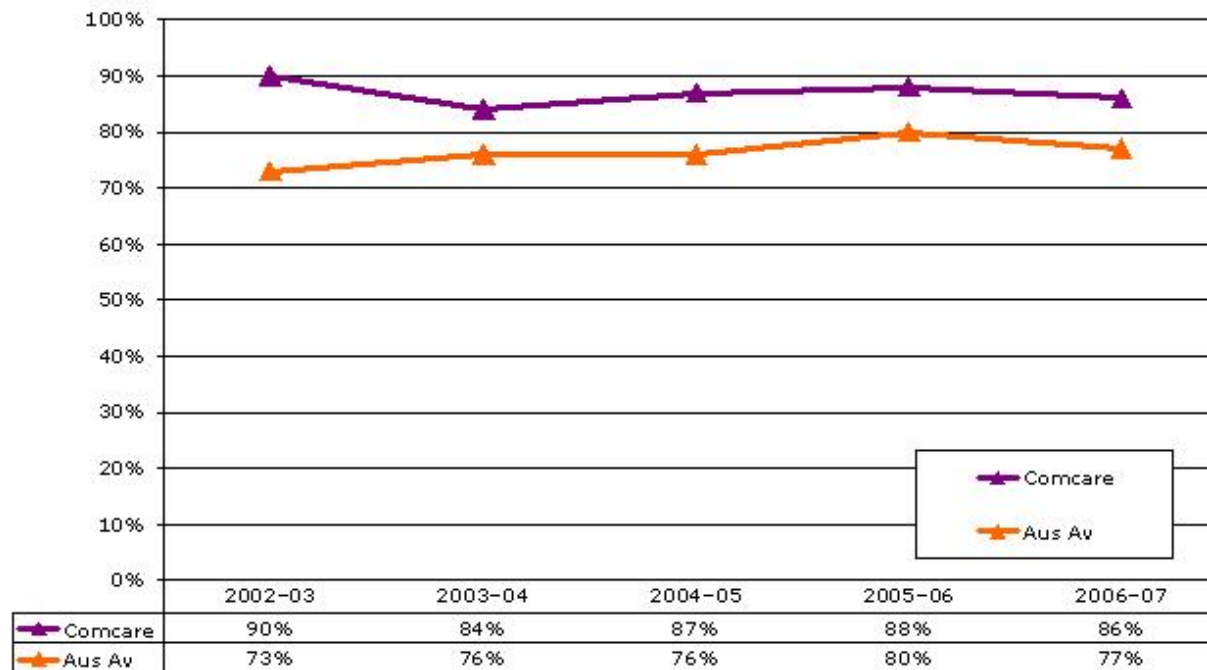
- More than 200 employers and 410,000 employees covered nationally
- 28 licensees
- More than 95% of organisations in the scheme employ more than 100 people
- Diverse risk profiles, with substantial use of contractors and sub-contractors

# Performance measures

- High proportion of workplaces with systems in place to manage safety risks
- Reduced incidence of workplace injuries and elimination of fatalities
- Reduced incidence of safety breaches
- High rate of durable return to work

# Comcare Scheme Performance - Australia's Safest Workplaces

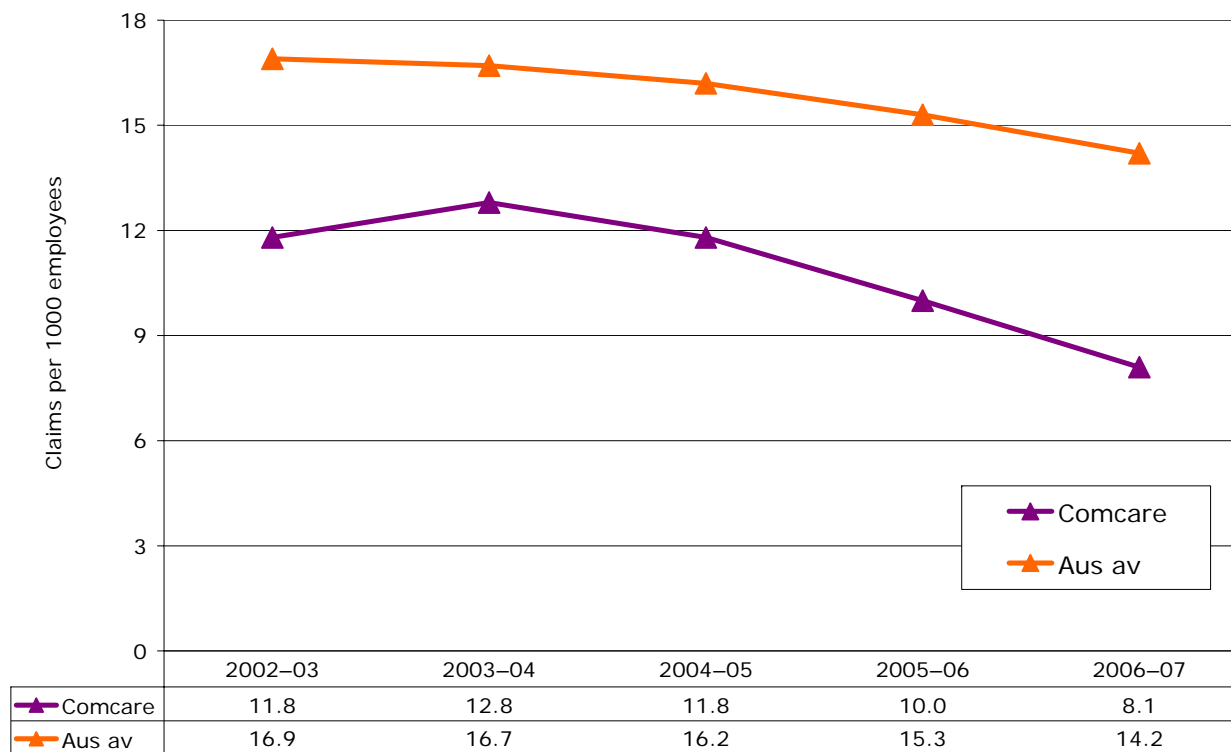
Durable Return to Work (RTW)\* rate



\* Refers to an injured worker who returned to work and was still working six to nine months after their claim.  
Source: Australia and New Zealand Return to Work Monitor and Comcare Licensees Return to Work Monitor, 2002-03 to 2006-07

# Comcare scheme performance

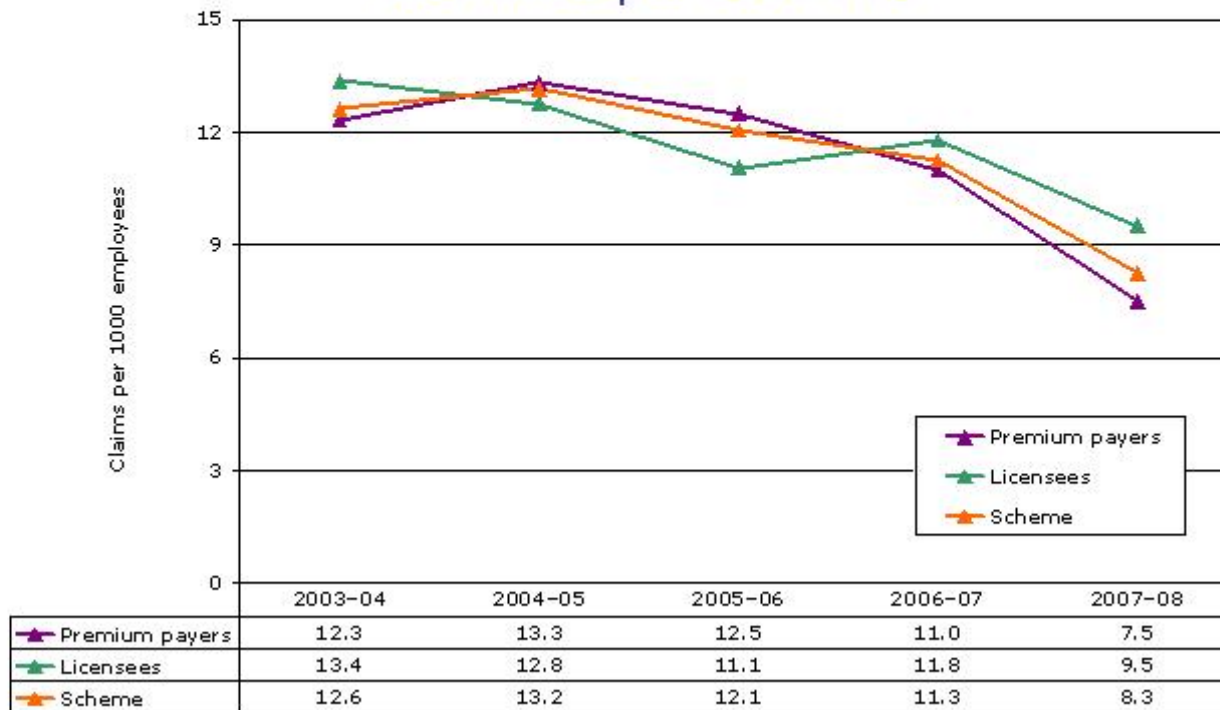
## Incidence rates of serious\* injury and disease claims



\*Includes all accepted workers' compensation claims involving temporary incapacity of one or more weeks plus all claims for fatality and permanent incapacity.  
Source: Comparative Performance Monitoring Report, Tenth edition, Indicator 5

# Comcare Scheme Performance - Australia's Safest Workplaces

Incidence of claims\* resulting in one week or more lost time per 1000 FTE



\*Excludes commuting claims

# Two reviews

- The Comcare scheme review
  - to ensure that Comcare is a suitable OHS and workers' compensation system for licensees and their employees
  - report is yet to be released
- The National OHS review

# National OHS review

- Harmonising national OHS laws
- As the Commonwealth's OHS regulator, Comcare would immediately adopt harmonised legislation
- This will require changes to our OHS regulatory regime and how we oversee it

# The future

- Dependant on the outcome of the Comcare scheme review and the National OHS review
- Comcare will be an early adopter of any new legislative proposals
- Until then, Comcare continues to work to support Australia's safest workplaces