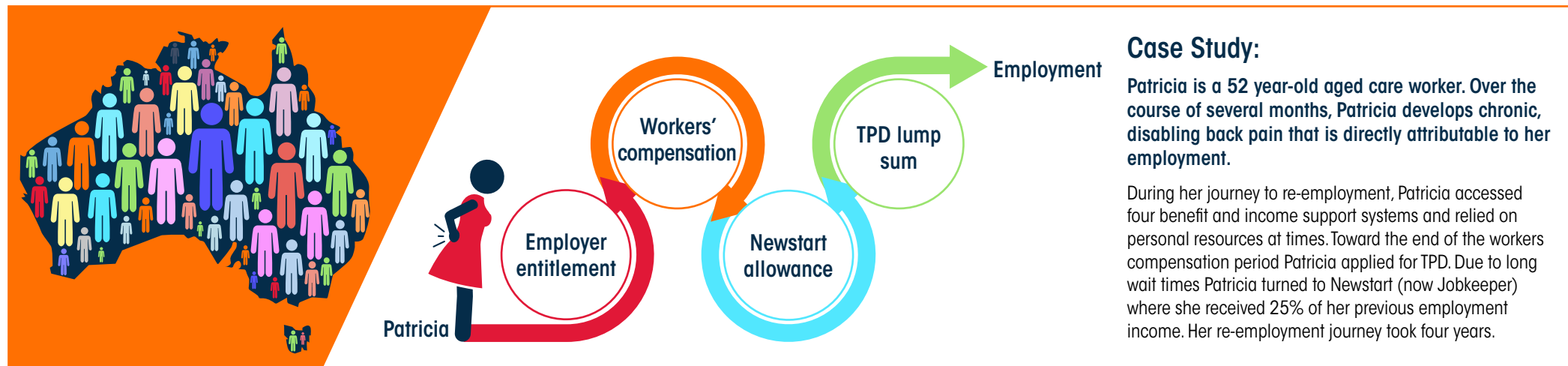


# INCOME SUPPORT TRANSITION MODEL

Australia has ten benefit and income support systems available to those with a temporary or permanent mental or physical health condition, illness, injury or disability that completely or partially affects their ability to work.



Patricia was one of **786,000** people who were unable to work due to ill health, injury or disability that received income support from a commonwealth, state, territory or private source in the 2015/16 financial year.

An extra **6.5 million** people accessed employer provided leave entitlements for short periods of work incapacity.

**\$37.2 billion** was spent on income support during this year.

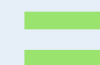
## We know that:

- A large number of working-age Australians experience periods of temporary or permanent work incapacity due to ill health, disability or injury.
- A single transition between systems can take months, is highly stressful and often involves long periods of no income.
- Many people will access one or more systems and will often start in an upstream system such as life insurance or workers compensation and end up in a downstream system like social welfare. For those that enter social welfare, evidence says that they are unlikely to ever return to employment.

By understanding the relationships between each system and improving transition between the systems we can improve outcomes for individuals, the community and the economy.



By taking a national prevention focus we can better support people experiencing ill health, injury or disability to remain in work throughout their working age life.



Together we can we can achieve a nationally consistent and improved approach to services and supports.



Healthy Working Lives

For more information contact  
[collaborativepartnershipsecretariat@comcare.gov.au](mailto:collaborativepartnershipsecretariat@comcare.gov.au)

# INCOME SUPPORT TRANSITION MODEL

For the first time in Australia we have the ability to visualise and better understand the complex behaviours, relationships and transitions between the ten benefit and income support systems. We can now determine how a decision made in one system impacts the other systems and the effect this has on the economy, communities, individuals and their families.

