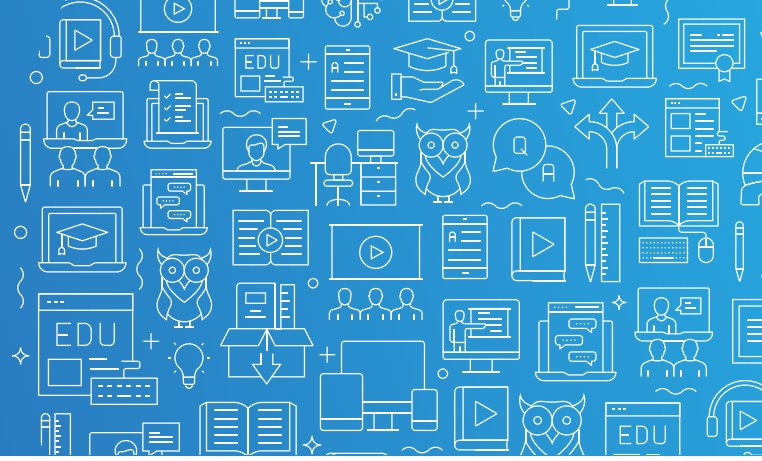


COMCARE LIVE LEARNING

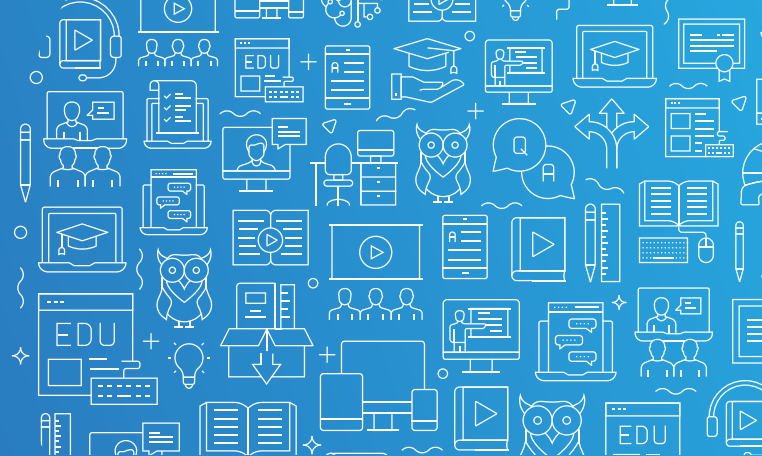


2025 Education Workshop Calendar

	January	February	March	April	May	June
Psychosocial Risk Management 9:30 am – 1:30 pm	–	4	20 12:30 – 4:30 pm	–	6	–
Workplace Rehabilitation Providers 9:30 am – 1:00 pm	–	6	13 1:00 – 4:30 pm	9	13	19
Work Health and Safety Supervisors 9:30 am – 1:00 pm	–	–	12	–	8	–
Work Health and Safety Incident Management 9:30 am – 1:00 pm	–	12	–	8	–	17
Work Health and Safety Contractor Management 9:30 am – 1:00 pm	–	–	25	–	14	–
Payroll 9:30 am – 1:00 pm	–	20	–	–	15	–
Managers: Workplace Sexual Harassment 9:30 am – 1:00 pm	–	27	–	3	–	–
Rehabilitation Case Managers Fundamentals Day 1 9:30 am – 1:30 pm	–	25 12:30 – 4:30 pm	–	29	–	–
Rehabilitation Case Managers Fundamentals Day 2 9:30 am – 1:30 pm	–	26 12:30 – 4:30 pm	–	30	–	–
Type Of Occurrence Classification system 9:30 am – 1:00 pm	–	–	–	1	–	5
Advanced Rehabilitation Case Managers Day 1 9:30 am – 1:30 pm	–	–	26	–	28	–
Advanced Rehabilitation Case Managers Day 2 9:30 am – 1:30 pm	–	–	27	–	29	–
Bullying: Awareness and Prevention 9:30 am – 1:00 pm	–	–	–	2	–	–
EOI – Work Health and Safety Committees 9:30 am – 1:00 pm	–	–	–	–	–	–

To register to enrol visit: <https://www.comcare.gov.au/about/training> or email: education@comcare.gov.au
Comcare learning can be delivered on request. Email us your expression of interest at education@comcare.gov.au.

COMCARE LIVE LEARNING



2025 Education Workshop Calendar

	July	August	September	October	November	December
Psychosocial Risk Management 9:30 am – 1:30 pm	29	–	2	–	25	–
Workplace Rehabilitation Providers 9:30 am – 1:00 pm	30	26	11	16	4 1:00 – 4:30 pm	2
Work Health and Safety Supervisors 9:30 am – 1:00 pm	–	5	–	21	–	–
Work Health and Safety Incident Management 9:30 am – 1:00 pm	–	7	–	–	–	–
Work Health and Safety Contractor Management 9:30 am – 1:00 pm	–	14	–	–	–	–
Payroll 9:30 am – 1:00 pm	31	–	–	23	–	–
Managers: Workplace Sexual Harassment 9:30 am – 1:00 pm	–	–	3	–	–	–
Rehabilitation Case Managers Fundamentals Day 1 9:30 am – 1:30 pm	–	12	–	–	5	–
Rehabilitation Case Managers Fundamentals Day 2 9:30 am – 1:30 pm	–	13	–	–	6	–
Type Of Occurrence Classification system 9:30 am – 1:00 pm	–	6	–	14	–	–
Advanced Rehabilitation Case Managers Day 1 9:30 am – 1:30 pm	–	–	17	–	26	–
Advanced Rehabilitation Case Managers Day 2 9:30 am – 1:30 pm	–	–	18	–	27	–
Bullying: Awareness and Prevention 9:30 am – 1:00 pm	23	–	–	–	–	–
EOI – Work Health and Safety Committees 9:30 am – 1:00 pm	24	–	–	–	–	–

To register to enrol visit: <https://www.comcare.gov.au/about/training> or email: education@comcare.gov.au

Comcare learning can be delivered on request. Email us your expression of interest at education@comcare.gov.au.